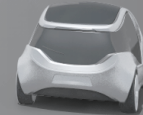


Connected mobility

# Community-based parking

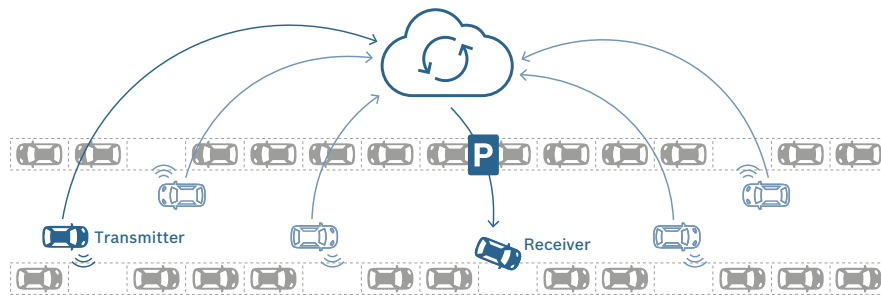
## Work together, park faster



- ▶ Connected solution for quickly finding available parking spaces on the street
- ▶ Latest parking information displayed via on-board instrument or smartphone
- ▶ Required vehicle technology (connectivity, sensors) already widespread
- ▶ Service also available to those looking to park cars with no sensors
- ▶ Cross-manufacturer platform with universal interface

approximately **4.5 km**

**saved per parking search**, as this is the average distance drivers cover in order to find a suitable parking space.



Parking information acquired by the community guides drivers to available parking.

up to **500 euros** more **time**

**less costs each year** – as every unnecessary search costs about 1.35 euros daily.

**by reducing parking searches** by up to 30 minutes.

