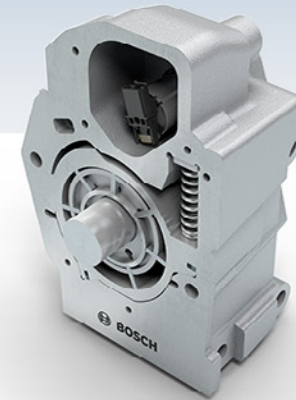


# Variable oil pump for commercial vehicles

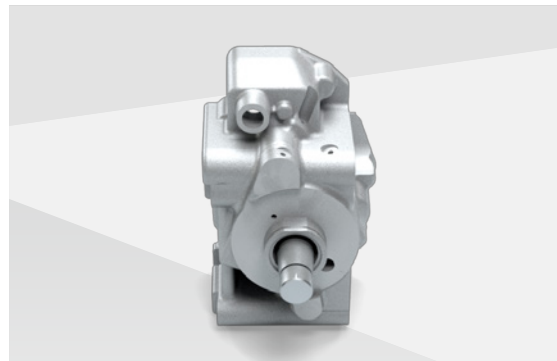
For reduced fuel consumption and lower emissions



**BOSCH**  
Invented for life



Constant and variable delivery pressure over the entire temperature range



up to

**1 %**

less fuel consumption and CO<sub>2</sub> emissions due to the variable oil pump with proportional valve compared to a fix displacement oil pump

**reduced  
development  
effort**

thanks to system approach and simulation prediction

- ▶ For efficient engine lubrication and piston cooling, the variable oil pump with proportional valve supplies exactly the right amount of oil in all situations and minimizes the torque absorption in non-critical operating points.
- ▶ Compared to a fixed displacement oil pump, fuel consumption and CO<sub>2</sub> emissions are reduced by displacement adjustment.
- ▶ Bosch offers the variable oil pump in different versions, such as oil pan design, compact front design and engine cover design.