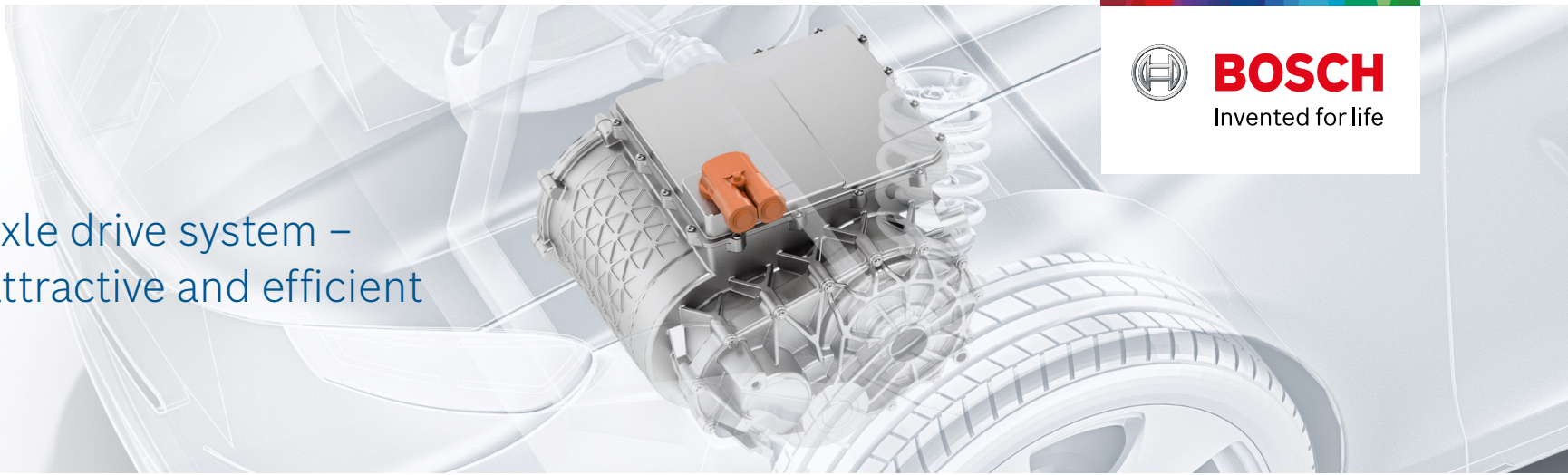
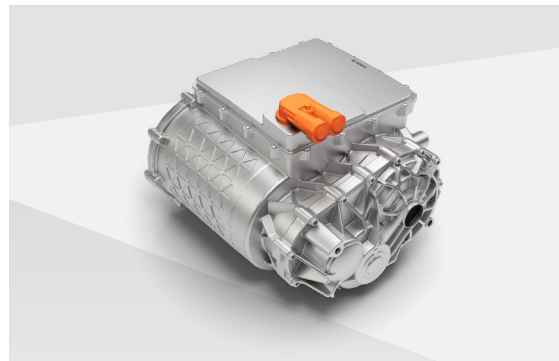
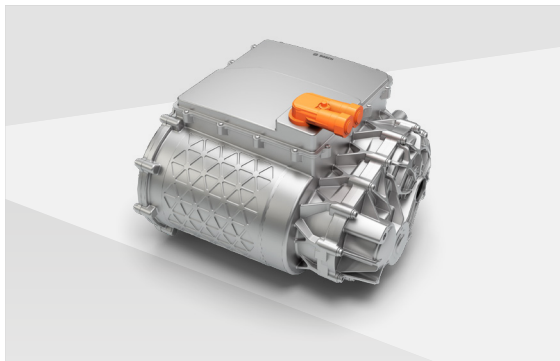


eAxle

The modular eAxle drive system –
compact, cost-attractive and efficient



Flexible use in all vehicle applications – from small cars to light commercial vehicles



up to

96 %

efficiency for more range or, alternatively, a
reduction in battery capacity thanks to the use
of silicon carbide semiconductor technology

even more

compactness

thanks to the integration of electric motor,
power electronics and gearbox in one single
system housing

- ▶ High scalability (50–300 kW) and flexibility in scope of delivery for individual customer demands and all vehicle types
- ▶ Cost-attractive thanks to the integration of all components in one system housing
- ▶ Silicon carbide semiconductors enable the use of eAxles with 800-volt and, therefore, increase of performance or, alternatively, the downsizing of the electric motor.